



**DESCRIPTION**

Solenoid valve in-line 2 way normally open direct acting poppet type.

**CONSTRUCTION**

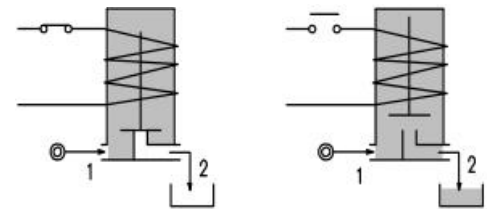
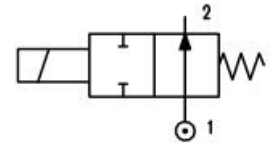
Body	Brass
Armature tube	Brass
Plunger and core	Stainless steel
Springs	Stainless steel
Seal material	NBR
	FPM
	EPDM



2

**FEATURES**

Maximum allowable pressure : max working pressure + 10%  
 Maximum fluid viscosity 25cSt (mm<sup>2</sup>/s)  
 Ambient temperature : with class F coil -10°C +55°C  
 with class H coil -10°C +80°C  
 Universal mounting position



**OPTIONS :** Armature tube in stainless steel  
 Electroless nickel plating  
 Explosion proof coil according to ATEX - EExmII Series 7  
 User port with hose tail connection

CODE ① ②	Connection G ISO 228	Orifice mm	KV m <sup>3</sup> /h	Differential pressure bar		Nominal power			Coil		Seal ①	Temp. range °C	
				Min	Max	AC Inrush	VA Holding	DC Watt	Series	Width			
													AC
<b>User port with M5 connection</b>													
E204A.....15///.....	1/8"	1.5	0.06	0	16	16	12	8	6.5	3	22	NBR=B	-10+90
E204A.....17///.....	1/8"	1.7	0.08	0	12	12	12	8	6.5	3	22		
<b>User port with hose tail connection</b>													
E204A.....15/1/.....	1/8"	1.5	0.06	0	16	16	12	8	6.5	3	22	EPDM=E	<+140
E204A.....17/1/.....	1/8"	1.7	0.08	0	12	12	12	8	6.5	3	22		
<b>User port with hose tail connection and relief valve</b>													
E204A.....15/3/.....	1/8"	1.5	0.06	0	16	16	12	8	6.5	3	22	FPM=V	-10+130
E204A.....17/3/.....	1/8"	1.7	0.08	0	12	12	12	8	6.5	3	22		

- ① Seal
- ② Coil

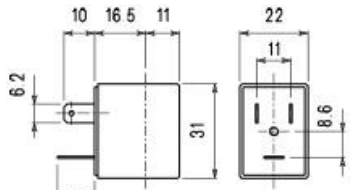
Example: E204AB17///301 NBR seal  
 Coil 24V DC



COILS	Alternating Current ~50/60Hz Volt							Direct Current Volt			Electrical connection	Connectors
	12	24	48	110	220 230	240	380	12	24	48		
Series 3 Width 22 Code ②	30A	30B	30C	30D	30E	30F	30G	300	301	302	DIN46244	PG9 code 10348000

**DESCRIPTION**  
 Class F insulation  
 Voltage tolerance  
 AC +15%-10%  
 DC ±10%  
 Protection class  
 IP65 with connector fitted  
 IP00 without connector  
 Continuous service ED100%

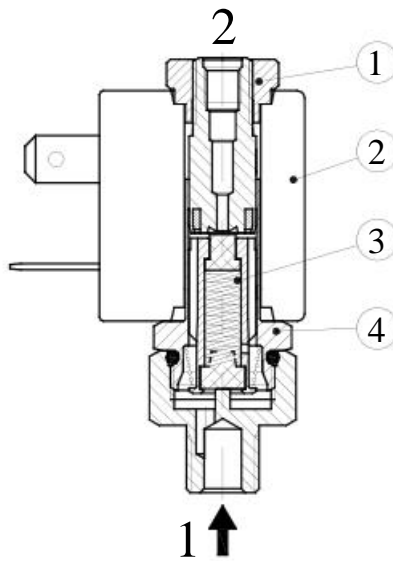
**OPTIONS**  
 Class H insulation  
 Cable attached  
 Special coil voltages  
 Special coil powers



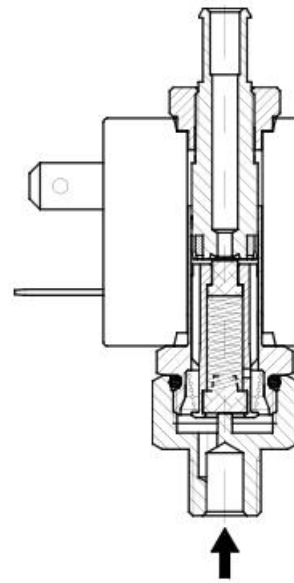
Series 3 Weight 0.05 Kg

**SPARE PARTS LIST**

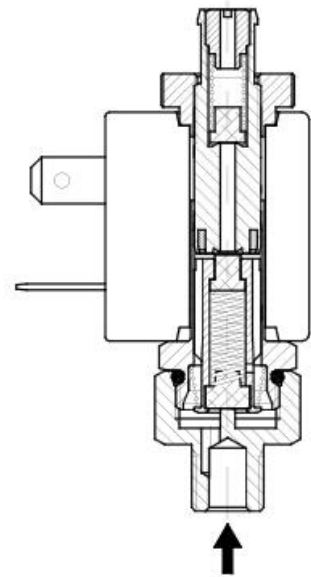
1. Coil fixing nut
2. Coil
3. Plunger
4. Armature tube with core



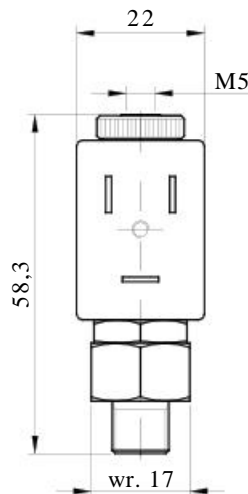
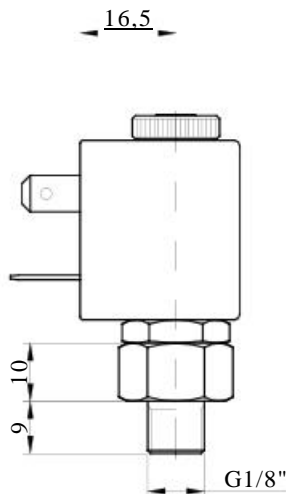
**Hosetail**



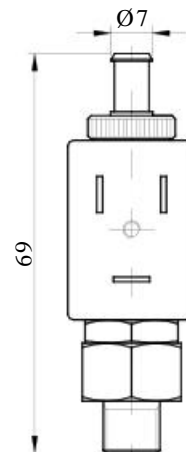
**Hosetail with relief valve**



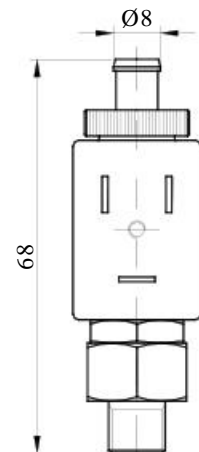
**OVERALL DIMENSION**



**Hosetail**



**Hosetail with relief valve**



Weight=0.10 Kg