

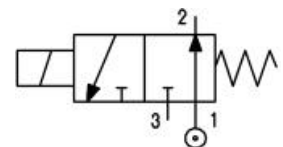


DESCRIPTION

Solenoid valve 3 way normally open direct acting poppet type

CONSTRUCTION

Body	Brass
Armature tube	Brass
Plunger and core	Stainless steel
Springs	Stainless steel
Seal material	NBR
	FPM
	EPDM



3

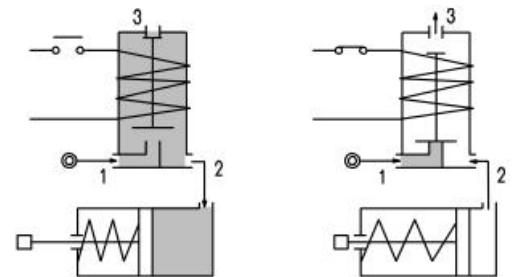
FEATURES

Maximum allowable pressure : maximum differential pressure + 10%

Maximum fluid viscosity 25 cSt (mm²/s)

Ambient temperature : with class F coil -10°C +55°C
with class H coil -10°C +80°C

Universal mounting position



- OPTIONS :** Stainless steel armature tube
Electroless nickel plating
Explosion proof coil according to ATEX - EExmII Series 7
Exhaust port with hose tail connection

CODE ① ②	Connection G ISO 228	Orifice mm		KV m ³ /h	Differential pressure bar			Nominal power			Coil		Seal ①	Temp. range °C
		Inlet	Exh.		Min	Max		AC Inrush	VA Holding	DC Watt	Series	Width		
						AC	DC							
E307A.....12///.....	1/8"	1.2	1.2	0.04	0	12	8	12	8	6.5	3	22	NBR=B EPDM=E FPM=V	-10+90 <+140 -10+130
E307A.....15///.....	1/8"	1.5	1.2	0.06	0	9	6	12	8	6.5	3	22		

- ① Seal
- ② Coil

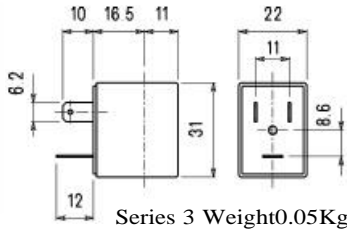
Example: E307AV15///30B FPM seal
Coil 24V 50/60Hz



COILS	Alternating Current ~50/60Hz Volt							Direct Current Volt			Electrical Connection	Connectors
	12	24	48	110	220 230	240	380	12	24	48		
Series 3 Width 22 Code ②	30A	30B	30C	30D	30E	30F	30G	300	301	302	DIN46244	PG9 code 10348000

DESCRIPTION
 Class F insulation
 Voltage tolerance
 AC +15%-10%
 DC ±10%
 Protection class
 IP65 with connector fitted
 IP00 without connector
 Continuous service ED100%

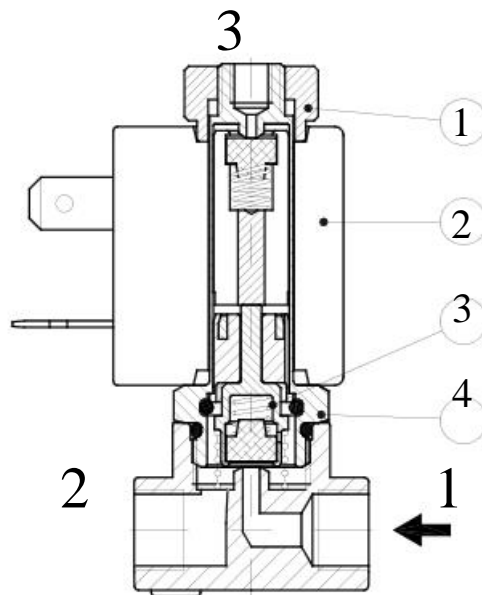
OPTIONS
 Class H insulation
 Cable attached
 Special coil voltages
 Special coil powers



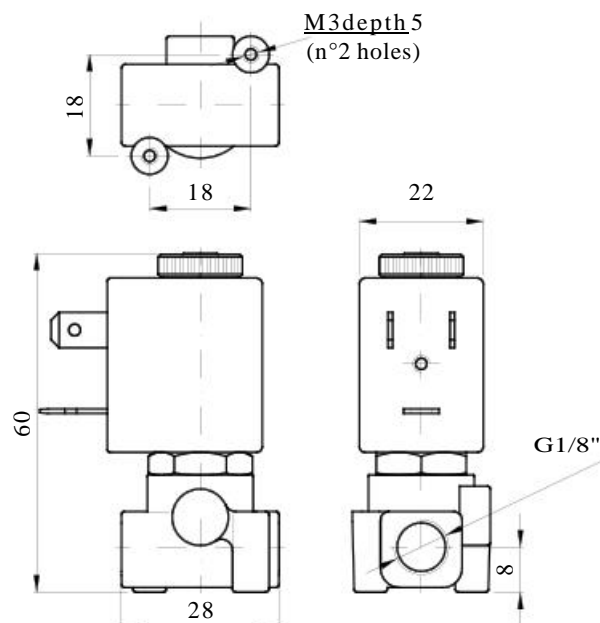
Series 3 Weight 0.05Kg

SPARE PARTS LIST

- 1. Coil fixing nut
- 2. Coil
- 3. Seal assembly
- 4. Armature tube with core



OVERALL DIMENSION



Weight=0.13 Kg