



DESCRIPTION

Solenoid valve 3 way normally open
direct acting poppet type for modular construction

CONSTRUCTION

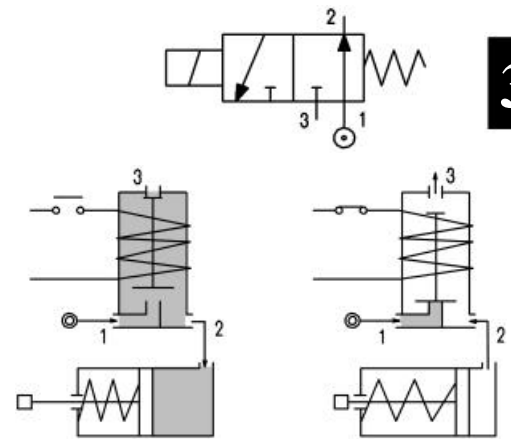
Body	Die-cast aluminium
Armature tube	Brass
Plunger and core	Stainless steel
Springs	Stainless steel
Seal material	NBR
	FPM
	EPDM



FEATURES

Media : Air, Natural gases
 Ambient temperature : with class F coil -10°C +55°C
 with class H coil -10°C +80°C
 Universal mounting position

OPTIONS : Electroless nickel plating
 Explosion proof coil according to ATEX - EExmII Series 7
 Wetproof coil fixing nut



NOTE: This valve ISN'T standard. Contact the manufacturer for any question

CODE ① ②	Connection	Orifice mm		KV m ³ /h	Differential pressure bar			Nominal power			Coil		Seal ①	Temp. range °C
		Inlet	Exh.		Min	Max		AC Inrush	VA Holding	DC Watt	Series	Width		
						AC	DC							
E351B.....15///.....	G1/4"	1.5	1.5	0.06	0	10	10	12	8	6.5	3	22	NBR=B	-10+90
E351B.....17///.....	G1/4"	1.7	1.7	0.08	0	8	8	12	8	6.5	3	22		
E351B.....17///.....	G1/4"	1.7	1.7	0.08	0	10	10	15	11	5	4	30	EPDM=E	<+140
E351M.....15///.....	M12x1.5	1.5	1.5	0.06	0	10	10	12	8	6.5	3	22		
E351M.....17///.....	M12x1.5	1.7	1.7	0.08	0	8	8	12	8	6.5	3	22	FPM=V	-10+130
E351M.....17///.....	M12x1.5	1.7	1.7	0.08	0	10	10	15	11	5	4	30		

- ① Seal
- ② Coil

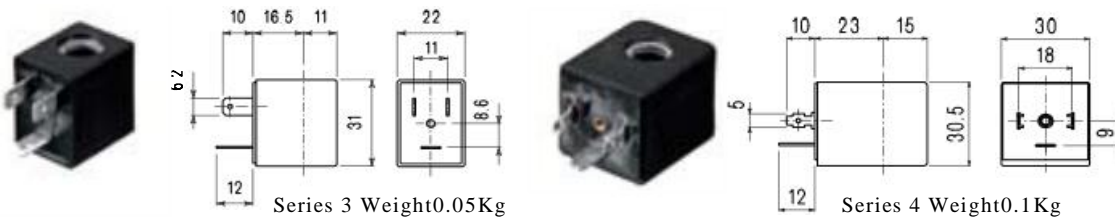
Example: E351MV17///301 FPM seal M12x1.5 connection
 Coil 24V DC



COIL	Alternating current ~50/60Hz Volt							Direct current Volt			Electrical connection	Connectors
	12	24	48	110	220 230	240	380	12	24	48		
Series 3 Width 22 Code ②	30A	30B	30C	30D	30E	30F	30G	300	301	302	DIN46244	PG9 code 10348000
Series 4 Width 30 Code ②	40A	40B	40C	40D	40E	40F	40G	400	401	402	DIN43650A	PG9 code 10349000

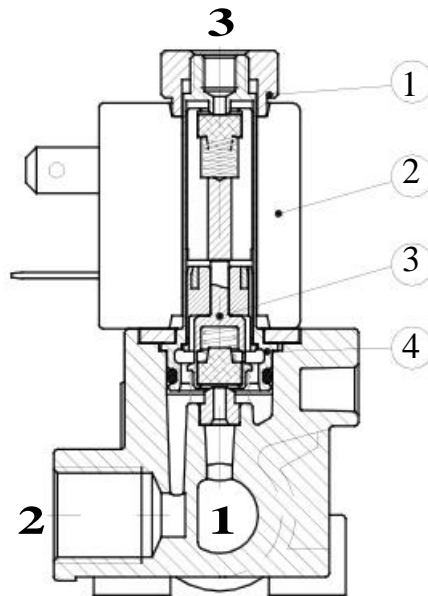
DESCRIPTION
 Class F insulation
 Voltage tolerance
 AC +15%-10%
 DC ±10%
 Protection class
 IP65 with connector fitted
 IP00 without connector
 Continuous service ED100%

OPTIONS
 Class H insulation
 Cable attached
 Special coil powers
 Special coil voltages

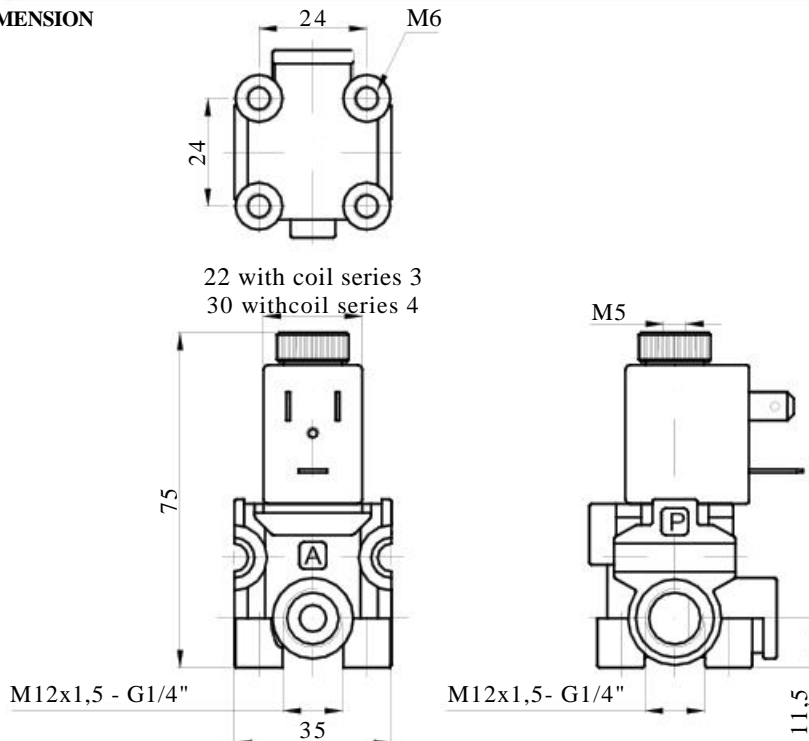


SPARE PARTS LIST

- 1. Coil fixing nut
- 2. Coil
- 3. Seal assembly
- 4. Armature tube



OVERALL DIMENSION



Weight with coil series 3 = 0.14 Kg
 Weight with coil series 4 = 0.19 Kg